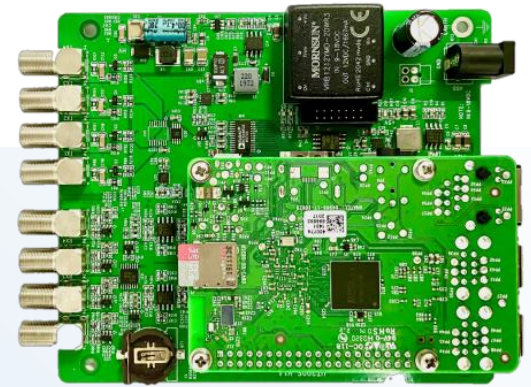


UT200S is a high-speed multichannel ultrasonic thickness gauge. It supports first-echo, echo-echo and echo-II (water submerge) measurement, which makes it ideal for online corrosion monitoring or robotic-based inspection for structures such as boiler tubes, large chemical containers or rail tracks. With echo-echo mode, the surface paint will be ignored and the thickness can be measured with high accuracy. UT200S is easy to use with automatic gain adjustment. It can be controlled remotely through a network interface wired or wirelessly. Multiple UT200S can be connected together for parallel inspection or large structure monitoring. Measurement data can be downloaded for advanced analysis.



UT200S OEM board

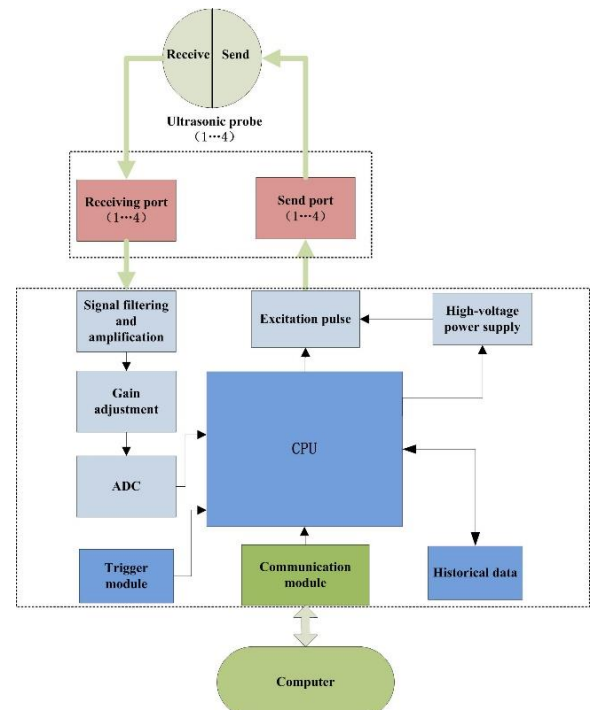


5 MHz Ultrasonic probe dual crystal



|                      |  |
|----------------------|--|
| Model number         | UT200S OEM board                         |
| No. of Channels      | 4  |
| Measurement range    | 2mm-100mm (0.08-4 inches)                |
| Connector            | LEMO 00                                  |
| Wave speed           | 1000-9999m/s                             |
| Resolution           | 0.001mm                                  |
| Accuracy             | H<5mm, ±0.002mm<br>H>5mm, ±(1%+0.005) mm |
| Data acquisition     | Single/continuous                        |
| Measurement method   | First echo; echo-echo; echo-II           |
| Microprocessor speed | 1.2GHz                                   |
| Data storage         | 32 GB                                    |
| Waveform export      | ASCII                                    |
| Network Interface    | WiFi/Ethernet                            |
| Power supply         | 9-18 VDC                                 |
| Power consumption    | 0.5A@12V                                 |
| Size (L*W*H)         | 122*106*29 mm                            |
| Working temperature  | -30° C~65° C                             |
| Working humidity     | 10%~90%RH                                |

|           |                            |
|-----------|----------------------------|
| Name      | Ultrasonic thickness probe |
| Model     | BHU210                     |
| Frequency | 5MHz                       |
| Crystal   | dual                       |
| Diameter  | 8MM (0.31 inch)            |
| Range     | 2-200mm (0.08-8 inches)    |

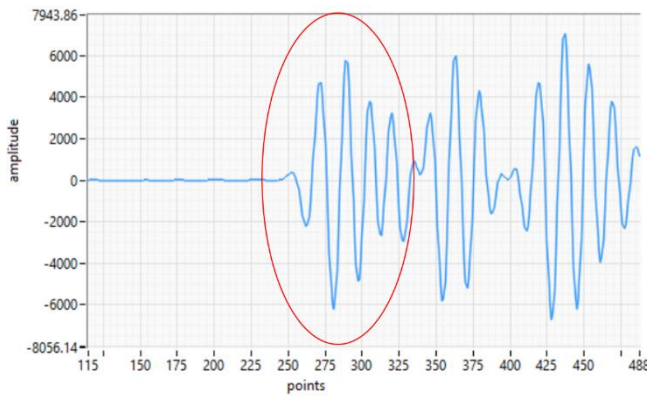


## UT200S Technical Advantages

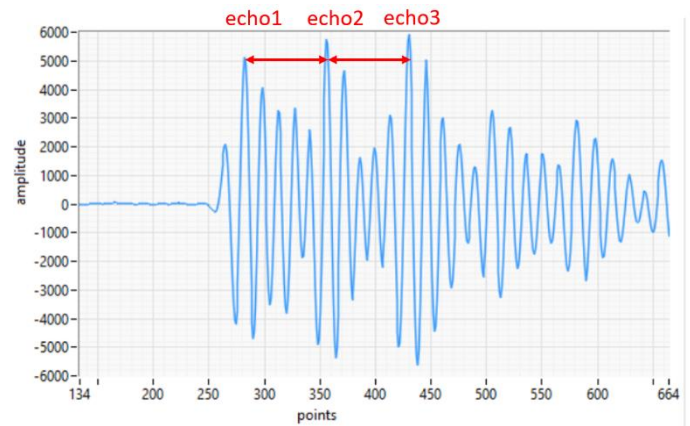
- Easy to use
- Low power
- Automatic gain adjustment
- Data export
- High resolution
- High accuracy
- Manual gain adjustment
- Adjustable sampling points
- Large data storage
- Waveform display
- Waveform zoom in/out
- History waveform replay
- Long distance control
- Multiple connection
- Individual channel control
- Integrated hardware filter
- Integrated software filter
- Isolated power supply



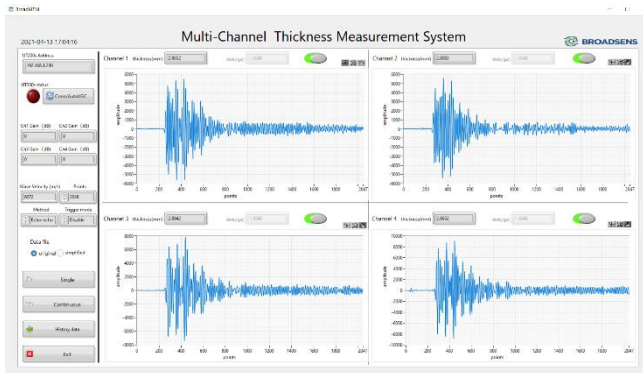
UT200S with enclosure



First-echo method



Echo-echo method



Software interface

UT200S control and analysis software BroadMTM can configure UT200S easily from a PC. The software allows user to select measurement mode, shows the thickness result and its waveform in real time. Each channel can be individually adjusted for accurate measurement. History data can be loaded and reviewed in the software interface. Each channel can be individually turned off when it is not in use. BroadMTM software supports single measurement or continuous measurement mode.

**“BroadSens, sense the broader world”**

**Website:** [www.broadsens.com](http://www.broadsens.com)  
**Sales:** [sales@broadsens.com](mailto:sales@broadsens.com)  
**Support:** [support@broadsens.com](mailto:support@broadsens.com)

### USA Headquarter

. 1601 McCarthy Blvd, Milpitas, CA, 95035

### China Offices

. 1707-A066, No.9 North Fourth Ring West Rd, Beijing  
 . Rm 803, No.152, Huixin Rd, Nanhu District, Jiaxing