



# ULTRA THERMAL

Professional handheld thermal camera

DALI-T9/T10



## Parameter

Parameter	T9	T10
Type	T9	T10
Detector type	Uncooled FPA	
Pixel	384×288	640×480
NETD	≤0.05°C	
Frame rate	50/60Hz	
Lens	Automatic Identification	
Focusing method	Manual/electric/automatic	
FOV	25°×19°	
Monitor	4.0" TFT LCD, Color, with capacitive touch screen, 640×480	
Backlight	automatic / manual	
Spatial resolution	1.12mrad	0.67mrad
Super pixel function	768×576	1280×960
Display method	Infrared, visible light, picture-in-picture, dual-band fusion image (DSIE)	
Digital zoom	1~4x	
Visible light camera	5 million pixels	
Video output	HDMI	
Anchor point display	Laser positioning points are displayed on the image	
Video recording	Yes, the general video format storage of this machine, timing storage can be set, support infrared, visible light, fusion mode	
Image storage	Yes, infrared image JPEG format, with infrared temperature data; visible light, fusion JPEG format storage	
Note	60-second voice recording, stored with the image, optional text annotation	
Temperature range	-20°C~+650°C, can be extended to 1200°C	
Temperature accuracy	±2°C or ±2% of measured value, whichever is greater	
Temperature measurement mode	Real-time 4 movable points (the hottest and coldest points are independent), 3 movable areas (the highest temperature, the lowest temperature capture, average temperature measurement), line temperature measurement, isothermal analysis, temperature difference measurement, temperature alarm (sound, color)	
Battery	Rechargeable lithium battery, replaceable 4 hours	
Size	W116×D175×H278mm	
Weight	≤1.1kg (including battery)	
Interface	Mini-USB Type C, Micro-HDMI	
Laser	Laser rangefinder	
Fill light	2 LED	
WiFi	Real-time image transmission, can be operated through the mobile APP control menu, stored images can be analyzed to generate reports, applicable to Android & ios systems	
Bluetooth module	Audio output/input (Bluetooth headset)	
GPS	Yes	
Electronic compass	Yes	
Operating temperature	-15°C~+50°C	
storage temperature	-40°C~+70°C	
Humidity	≤95% non-condensing	
Protection level	IP54	
Fall	2m, GB/T2423.8 (IEC60068-2-32)	
EMC	Meet CE requirements	
RoHS	2011/65/EC	
Laser	IEC60825-1-2014	

**ZHEJIANG DALI TECHNOLOGY CO.,LTD**  
 Add:639 Binkang Road, Hangzhou, P.R.CHINA, 310053  
 Tel:+86-571-86695623 Fax:+86-571-86695600  
 http://www.dali-tech.com E-mail:sales@dali-tech.com



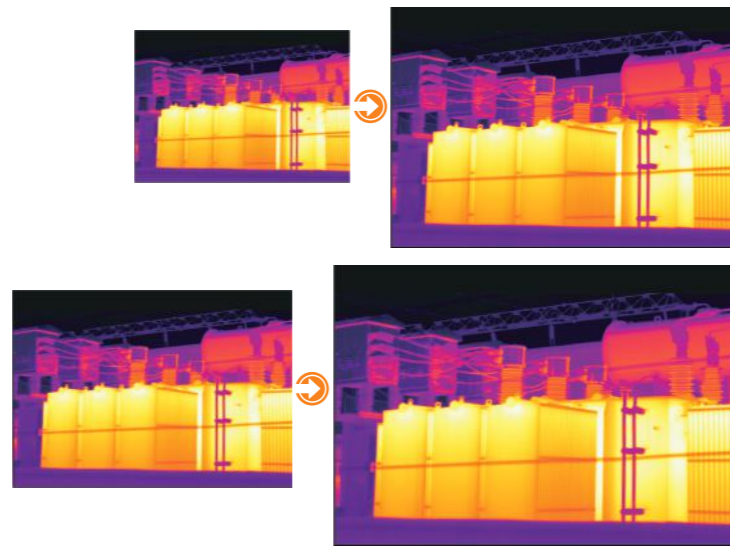
The information contained in this document is subject to change without notice.

www.dali-tech.com



**Super pixel**

384X288 / 640X480 pixel, Super pixel up to 768X576 / 1280X960.



**Manual and automatic integrated thermal imaging lens  
Automatic recognition of extended lens**

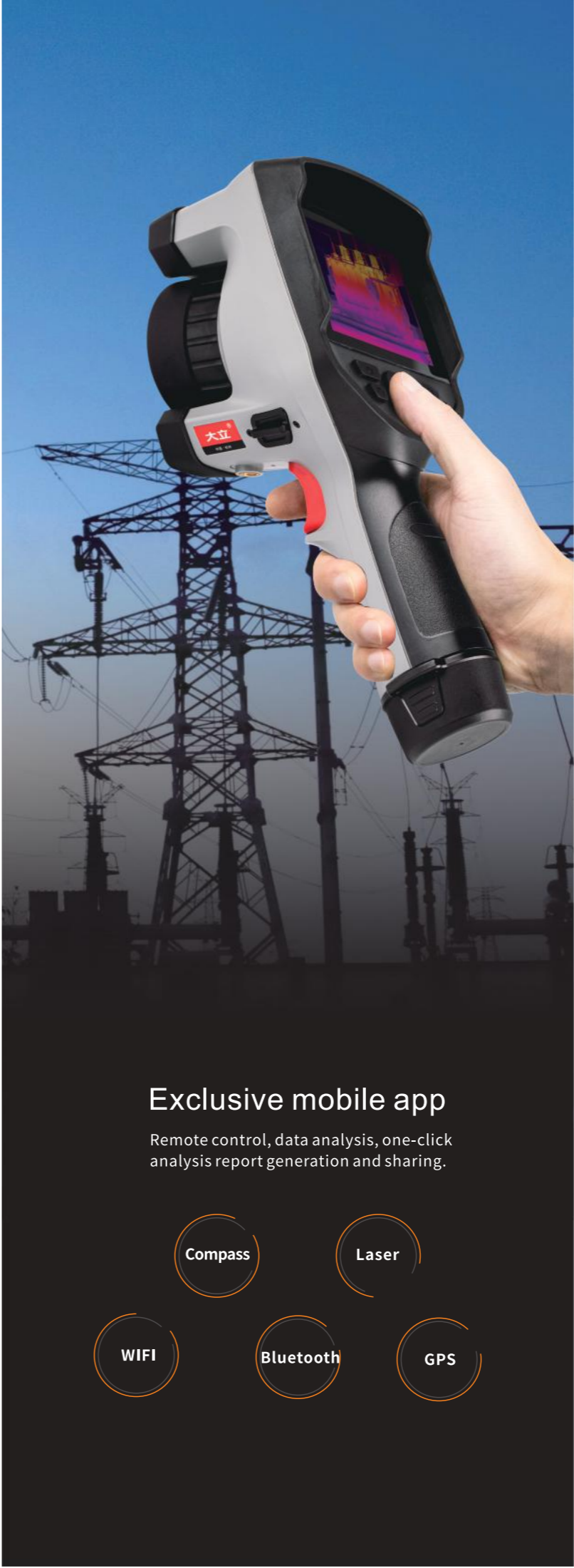
Wide-angle, telephoto, and medium-telephoto lenses are optional, suitable for more scenes.



LENS TYPE	FIELD of VIEW
Standard lens	25°×19°
0.5 times lens	12°×9°
2x lens	46°×34°
3x lens	7°×5°

**Instantaneous auto focus**

Built-in laser rangefinder, one-key intelligent autofocus according to the target distance.



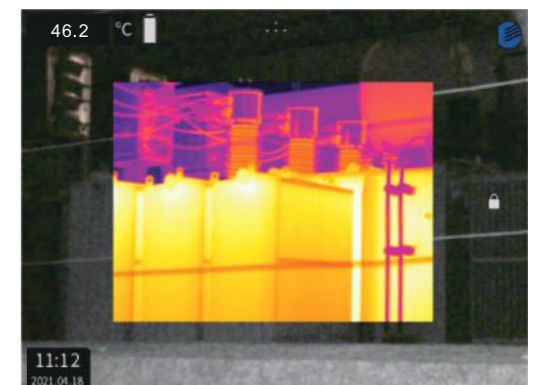
**Dual-band Image Fusion mode**



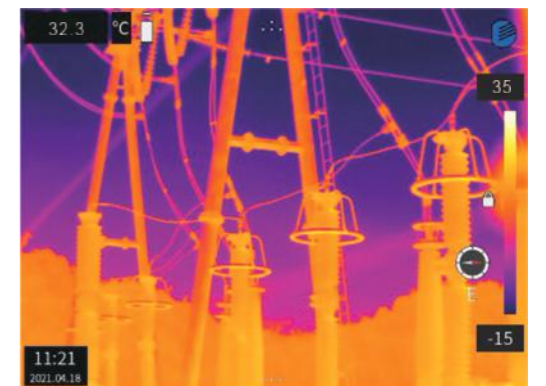
**Visible light mode**



**Picture-in-Picture mode**



**Infrared mode**



**Exclusive mobile app**

Remote control, data analysis, one-click analysis report generation and sharing.

